

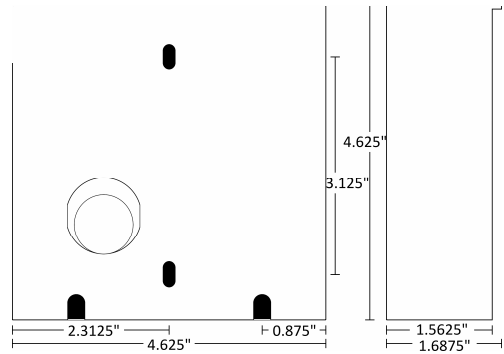
## DESCRIPTION



These Back Boxes are manufactured in steel with black powder coating which provides superior protection for your Liberty Model Door Stations. The **DP38-BXFS** is a surface mount back box for double-gang (F-Series) Door Stations. The **DP38-BXMF** and **DP38-BXMS** are flush and surface mounts for Music and Sound sized (M-Series) Door Stations. Surface mounts allow the Door Station to be mounted on almost any surfaces such as walls or gates. Flush mounts allow the Door Station to be mounted into its respective sized box.

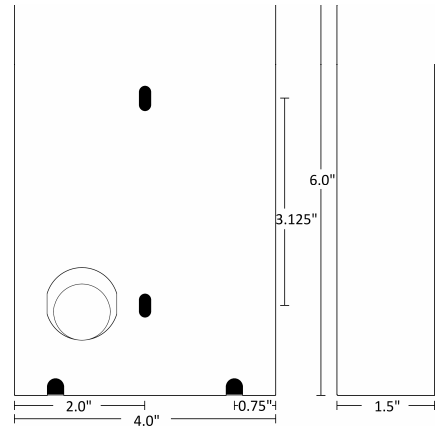
## FEATURES

- Manufactured in steel with black powder coating
- Surface mount back box provides an overhang for extra protection
- Surface mount back box can be easily mounted on most surfaces including fences, gates, or exterior house walls
- 2 available wiring hole sizes for any wiring needs



## APPLICATIONS

- Can be placed at locations including but not limited to:
  - Front/Rear Entrances
  - Remote Entryways
  - Marine Docks
  - Delivery Docks
  - Secured Facilities
  - Senior Housing
  - Disabled Housing
  - Apartment Complex
- Protect any extra electronics (e.g. cameras) that may be used in conjunction with the Door Station



## SPECIFICATIONS

### Dimensions:

- 2-Gang Surface Mount: 4.625" x 4.625" x 1.5625"
- M&S size Flush Mount : 4.0" x 6.0" x 1.5"
- M&S size Surface Mount: 4.25" x 6.375" x 1.5625"

